

# Large Garbage Items

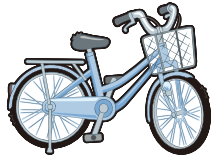
Large-sized Garbage Reception Center  
0120-138534

Reception hours: 9:00 a.m. to 5:00 p.m.  
(Closed on Saturdays, Sundays, national holidays, substitute holidays, and New Year's holidays)

There are two ways to dispose of these items.  
(1) Bring them directly to the Environmental Center (See p. 14)  
(2) Have them collected from your house (Apply via the Large-sized Garbage Reception Center)

## Covered items

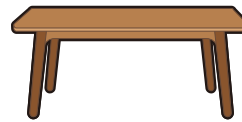
Items that do not fit in the designated garbage bags; measure 60 cm or more in length, width, or height; or weigh more than 6 kg, regardless of their size



Bicycles



Furniture



Desks



Rugs

\*Only items of a size and weight that can be carried by two adults will be accepted. Air conditioners, TVs, refrigerators, freezers, washing machines, dryers, and PCs are not considered large garbage items. (See p. 11-12)

## How to use the home collection service **800 yen per item** Up to five items can be accepted per application.

- 1 Call the **Large-sized Garbage Reception Center** and ask to have them collected.

### Large-sized Garbage Reception Center

0120-138534

Reception hours: 9:00 a.m. to 5:00 p.m.  
(Closed on Saturdays, Sundays, national holidays, substitute holidays, and New Year's holidays)

\*IP phones cannot reach this number.

\*You can apply anywhere from one month (30 days) to one week prior to the collection date (excluding the collection date itself).  
(Example) If you apply on April 2, the closest possible collection date is April 9.

- 2 You can buy **large garbage item disposal tickets** at city hall, branch offices, supermarkets, or convenience stores (some locations do not sell them).



\*These tickets are non-refundable. Also, they cannot be reissued if they are damaged or lost.

- 3 Please write your reception number (or name) on the ticket and attach it to your large garbage item. Then, dispose of it at the designated place **by 8:30 a.m. on the collection day**. For apartment buildings, you can place items near the entrance on the first floor. \*You do not have to be there for the collection.  
\*We will not enter your living space to take any items.

## Collection days Each district has set collection days for large garbage items.

Home collection days by district for large garbage items (Collected once per week)

Collection day	Monday	Tuesday	Wednesday	Thursday	Friday
District	Miyanishi, Kifune, Daishi, Mukaiyama, Fuji, and Imaise-cho	Nishinari, Tanyo-cho, and Chiaki-cho	Haguri, Azai-cho, Kitagata-cho, and Kisogawa-cho	Kamiyama, Yamato-cho, and Hagiwara-cho	Oku-cho, Okoshi, Konobunakashima, Sanjo, Daitoku, Asahi, and Kaimei

\*No collection on Saturdays, Sundays, national holidays, substitute holidays, and New Year's holidays

### Disposal method and cautions

Uncrushable items such as rubble, roof tiles, concrete products, and so on that weigh up to 100 kg can be collected from your home as items unsuitable for disposal for a fee. Please apply via the Environmental Center (Tel.: 0586-45-7004). The fee is 800 yen per 50 kg. (Collection days are specified.)  
You can also bring items directly to the Environmental Center. Items removed by contractors are considered industrial waste and cannot be collected or processed by the city.